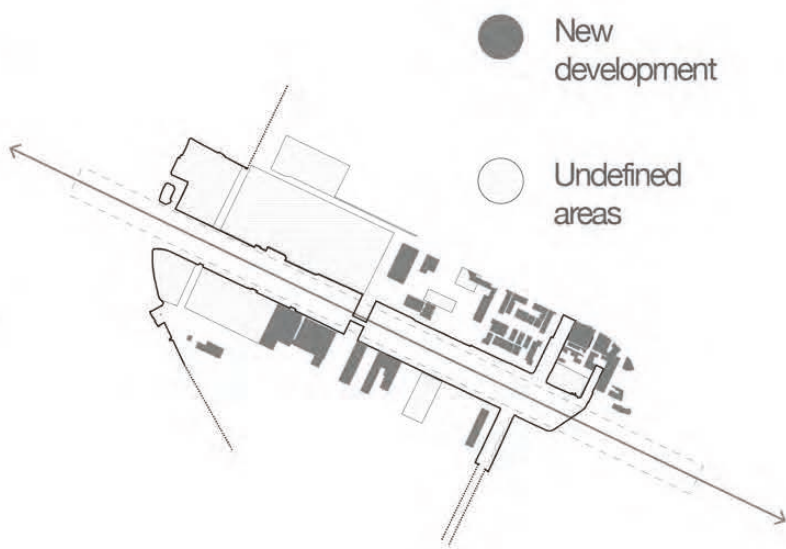


Amsterdam Papaverdriehoek (NL)

NP407 Pro(A)ctive District

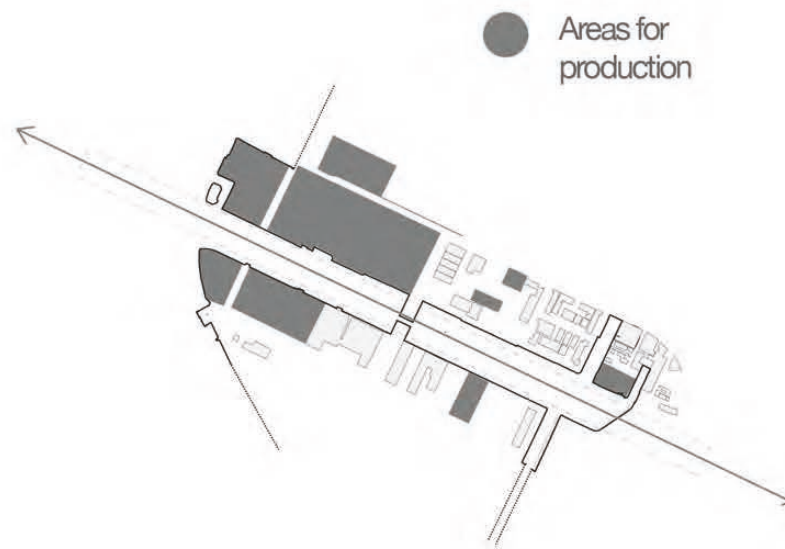
New development

The district of Papaverdriehoek is subjected to a project of renovation and revaluation of the all area. The new development is established in order to improve the quality of the lifestyle in the district. Those new buildings are based on the idea of the circular economy and are multifunctional.



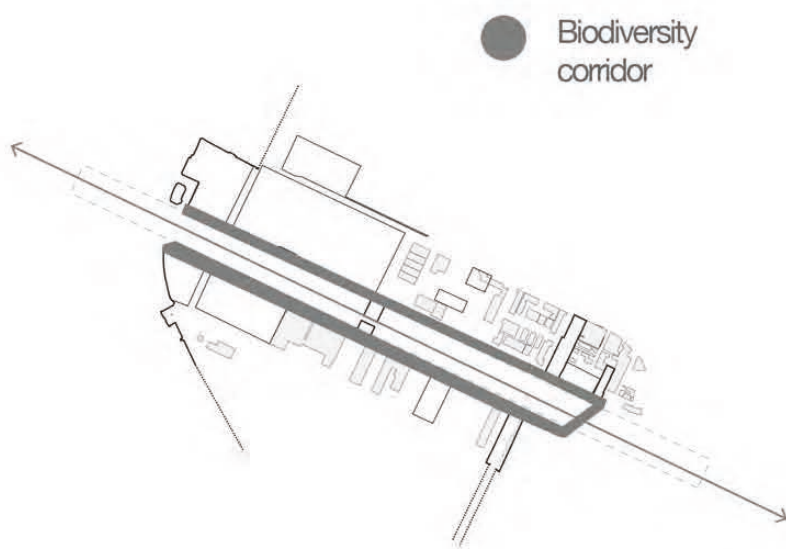
Productive areas

The spare areas, which are not included into the development are considered as a new possibility to develop a new productive district. The idea of enlarging the strategic area is using this blank space to create land for intensive production of wood, hemp and food in order to provide main local sources to the inhabitants.



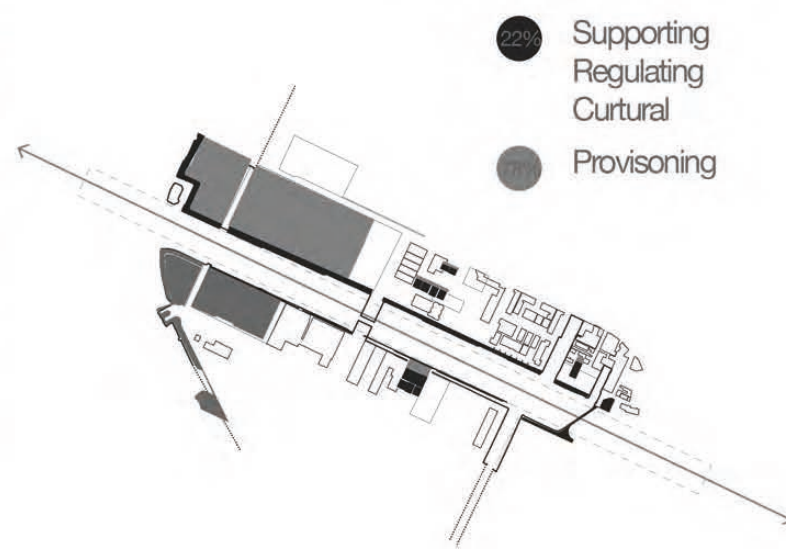
Biodiversity Corridor

The regulation element in the system is the biodiversity corridor. This buffer zone is developed among the main river bank and links the urban ecosystem to the water transitional. This element is providing also new green areas for the inhabitants. The different kinds of vegetation are based on the local green biodiversity.

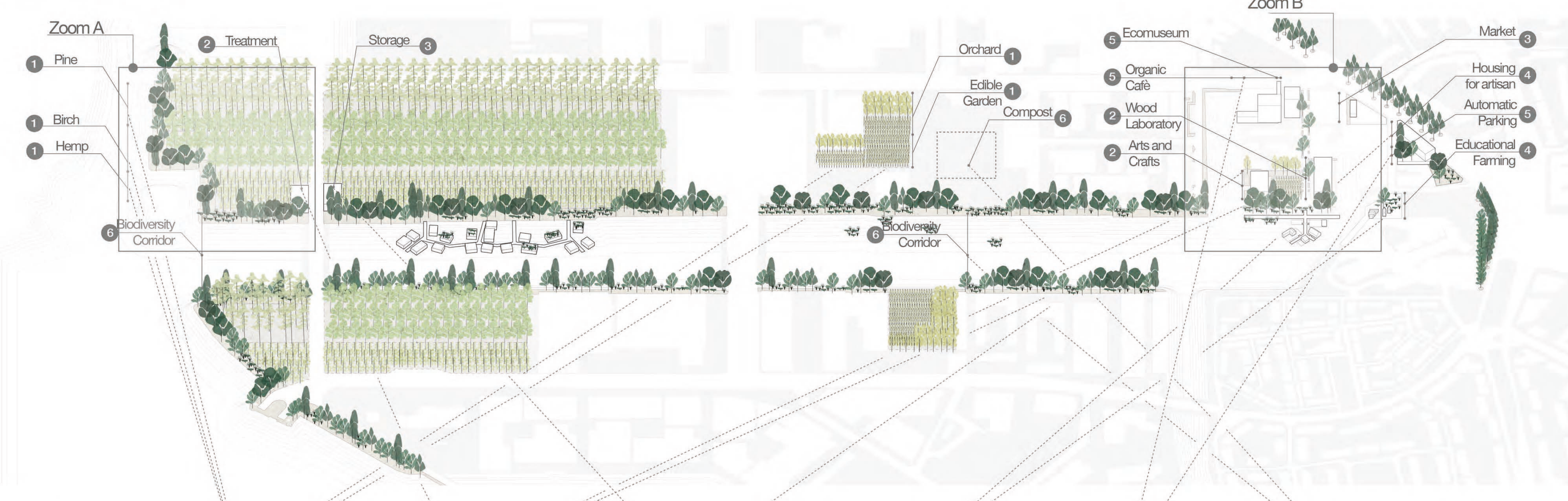


Land use

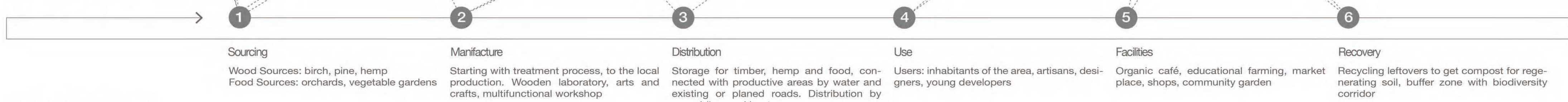
The new area consists of 78% of providing land and the 22% is biodiversity corridor: regulating, supporting and cultural ecosystem services. The main production is based on Pine, Birch and Hemp in order to give the main sources for new artisan's production. Also orchards and vegetable gardens are providing food to the inhabitants.



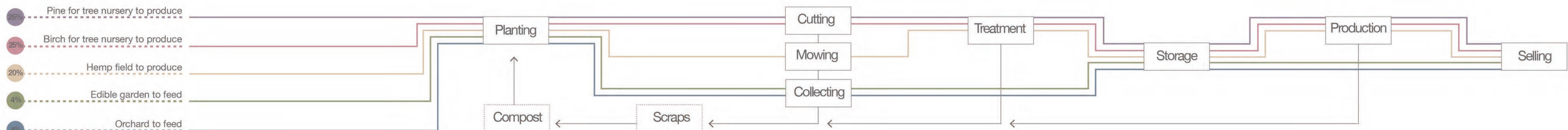
Masterplan 1:2500



Circular Economy



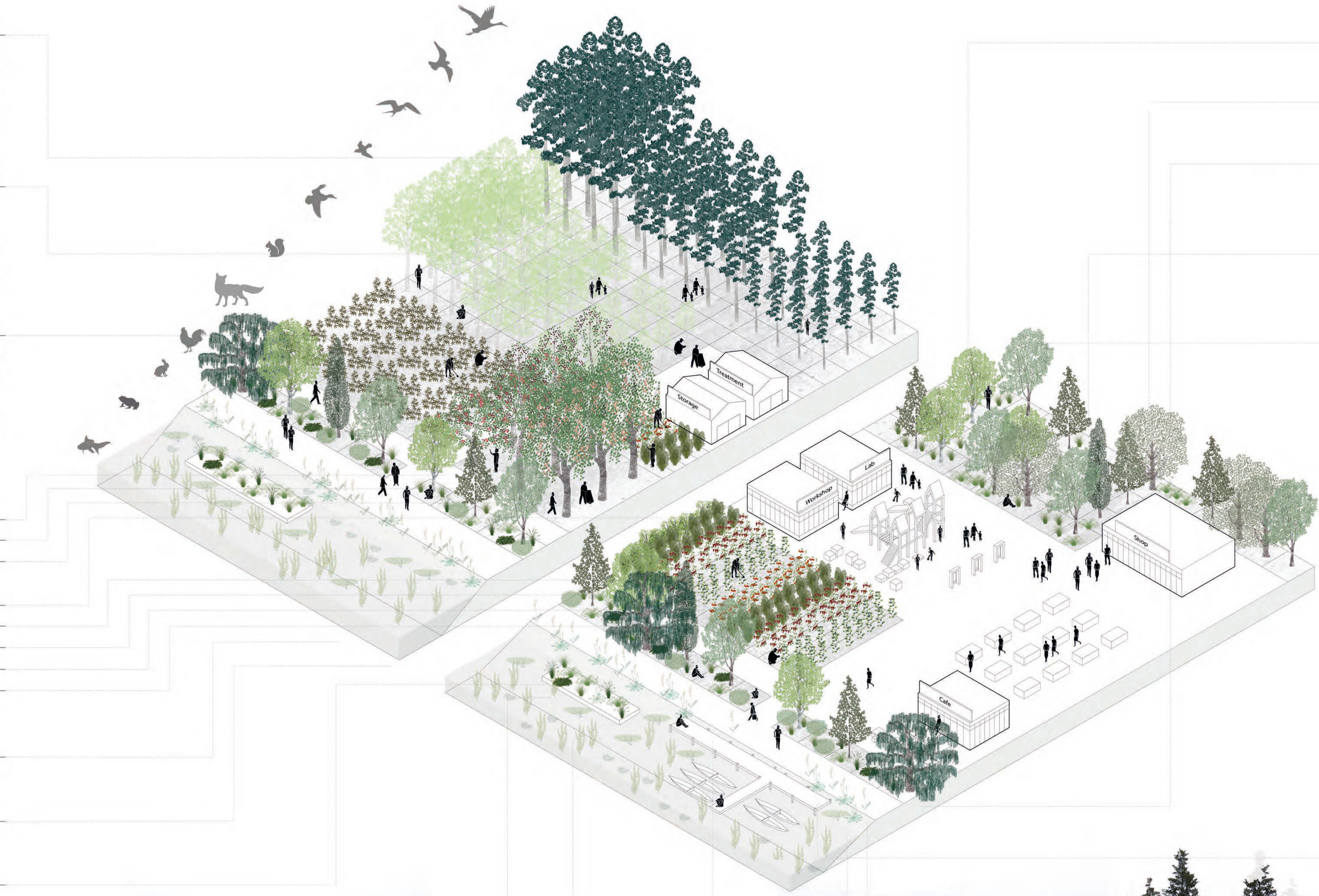
Productive System



Zoom A

Materials production

- Pine**
 - Pinus sylvestris*
 - Growth: 15 years
 - Cutting: ~ 28 837 m² ~ 2 300 trees
 - Materials: 6.6% of trees cutted every year (~ 150 trees) each year ~ 72 m³ of timber
 - Final production: ~ 0.5 m³ of wood for a piece of furniture: tables, chairs, beds, wardrobes
- Birch**
 - Betula humilis*
 - Growth: 10-15 years
 - Cutting: ~ 37 453 m² ~ 3 000 trees
 - Materials: 6.6% of trees cutted every year (~ 200 trees) each year ~ 96 m³ of timber
 - Final production: ~ 0.5 m³ of wood for a piece of furniture: tables, chairs, beds, wardrobes
- Hemp**
 - Cannabis sativa*
 - Growth: 3 months ~ 27219 m²
 - Cutting: ~ 108000 plants
 - Materials: 100% of plants twice a year ~ 1790 kg of hemp
 - Final production: ~ 1,5-2 m² of fabric for a product/ Bags, baskets, shoes, clothes, fabric, oil, paper
- Fruit trees**
 - Malus domestica*
 - Prunus cerasus*
 - Prunus domestica*
- Vegetable rotation**
 - Lactuca sativa*
 - Solanum tuberosum*
 - Capsicum annuum*
 - Cucumis sativus*
 - Solanum lycopersicum*
- Water supporting system**
 - Callitriche*: water cleaning, Near/under water
 - Myriophyllum*: oxygenator, Under water
 - Plantanthera bifolia*: ornamental, Humid poor soils
 - Ceratophyllum*: food for fish and waterfowl, Not tolerate to light



Zoom B

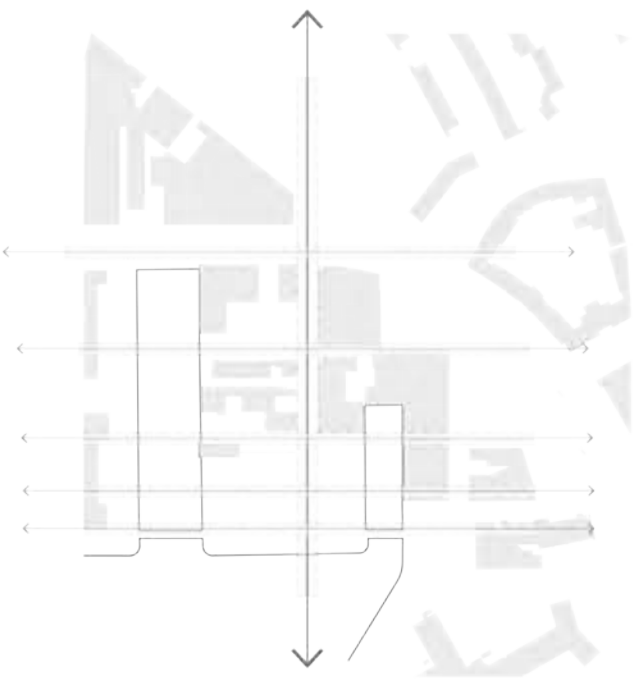
Biodiversity corridor system

- Shading plantations**
 - Ulmus hollandica* 'Groenvelde': shading, clay, chalky / sandy / wet soil
 - Quercus robur*: shading, Deep, moist and well drained soil
 - Salix x sepulcralis* 'Chrysozona': shading, Normally grown near water
- Wind protection plantations**
 - Populus nigra* 'italica': wind protection, Moist, nutrient rich soils
- Dust protection plantations**
 - Ulmus* 'Dodoens': dust protection along roads, Moist, fertile, well-drained soils
 - Salix purpurea* 'Nana': dust protection along roads, strengthening of coastal slopes, Normally grown near water
- Ornamental plantations**
 - Fagus sylvatica* 'Purpurea': ornamental along the paths, Well-drained soil
 - Hista*: ornamental, Good shadow-tolerance
 - Calamagrostis acutiflora*: ornamental, Dry sandy soils, loams
 - Spirea x cinerea*: ornamental, melliferous, Not demanding growth conditions
 - Deschampsia cespitosa*: ornamental, Normally grown near water



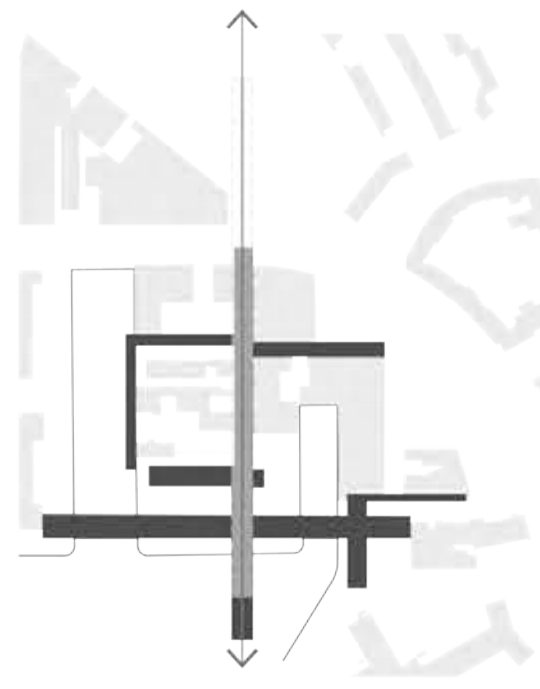
Main axes

There was a necessity to link the existing street Papaverweg to the river bank in the district, in order to provide sources. The road of Korte Papaverweg is considered as the main axis of the system.



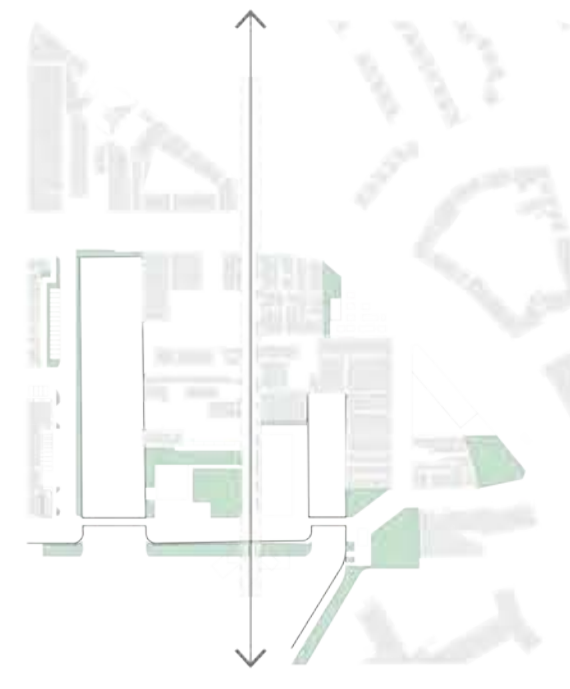
New paths

In order to increase the quality of the connection on the area, new paths are provided. Renewing of existing paths, creating connection between Veldbiesstraat and Papaverhoek, bringing new cycle routes.



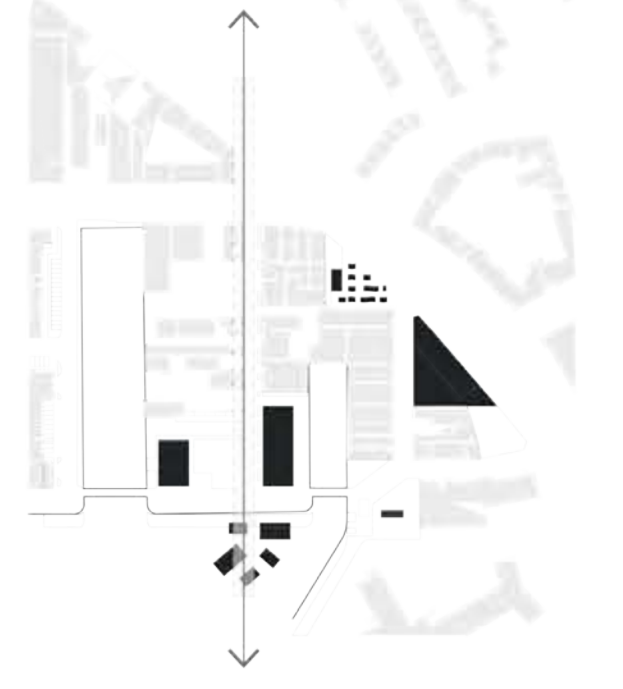
New public spaces

Variety of functions is provided within different time of a day/week/year. The quality of the area is improved by providing new green open spaces. The biodiversity system of the area includes the site and provides the nature heritage lacked during years.



New addition

New buildings' functions on the site is related to production and circular economy around it. This helps to recreate the area, lets it get occupied by workers and artisans.

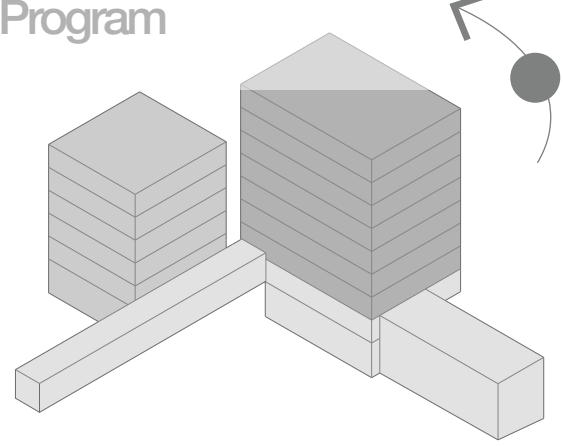


Masterplan 1:500

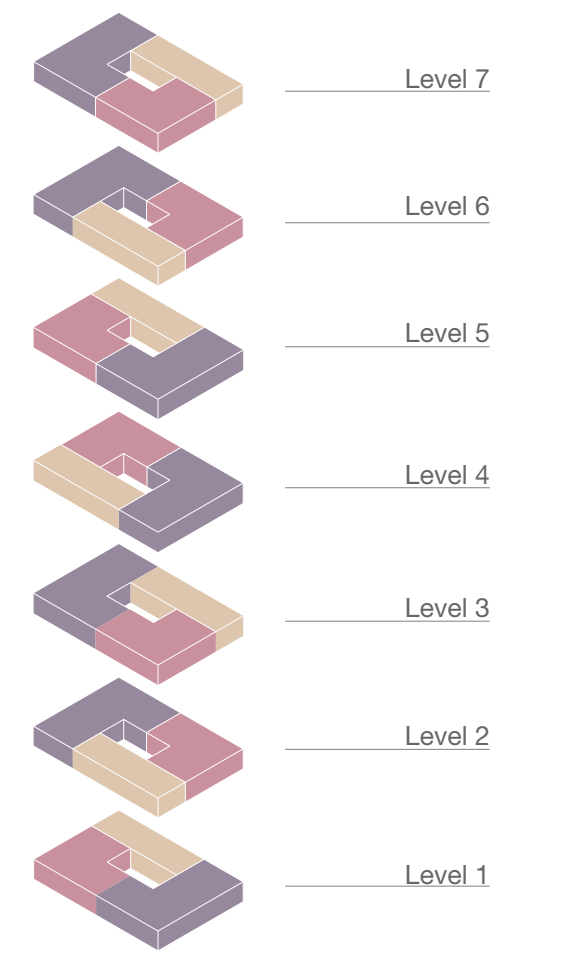


Amsterdam Papaverdriehoek (NL)

NP407^{Produ(A)ctive District}



Rotation plans appartements



- Ecomuseum** ●
 - Eco museum: Aiming to enhance the welfare and development of local communities, with a sustainable development, involving the community, improving the local network.
 - From the Main Sources/Material (pine, birch and hemp) through the productive process (arts and crafts) till the product (furniture, objects, accessories).
- Living Lab** ●
 - Open space laboratory for the production of artisan and designers. Workshop for children and families to take part in the productive system, following the educational itinerary of the eco museum, visit to the real arts and crafts production.
 - Shops: to sell directly the products of the productive system.
- Organic café** ●
 - Riverside café where local products are used. Starting from the furniture and objects as a result of the timber production, ending with the seasonal vegetables and fruits grown in the area.
- Work offices** ●
 - Coworking and Start Ups: Open spaces with free plan. For young developers.
 - Work office: For management of the main building and the new productive area, for the organization of the eco museum.
- Research Lab** ●
 - Laboratory for developing new material from the sources of the site. Research of different methods of cultivation.
- Accommodation** ●
 - 7 apartments of 60mq x 7 apartments of 107mq x 7 apartments of 87mq x Families of the designers and artisans or for the workers in the building

